

JANUS REMOTE COMMUNICATIONS

P
R
O
D
U
C
T
B
R
I
E
F

Terminus Plug-In Series GSM865CF Terminal Modem

Description

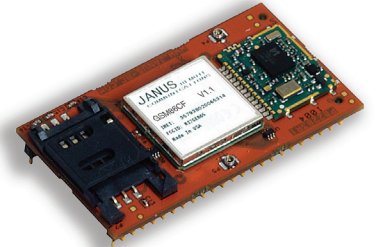
The Janus line of Terminus Plug-In modems are footprint compatible, GPS enabled, plug-in terminals for use in GSM/GPRS, EDGE, CDMA, HSPA+, EV-DO, LTE communication networks, and also Wi-Fi connectivity. They were specifically designed to provide customers with cost effective products that are easily integrated into new and existing designs, require limited customer certification resources, and are completely interchangeable to allow for maximum network flexibility while removing the worry of product obsolescence.

The Plug-In Terminus GSM865CF is a quad band, GSM/GPRS wireless communication modem specifically designed for worldwide M2M network deployment. Easily integrated into any new or existing hardware applications via its standard DIP pin configuration, the GSM865CF is a cost-effective solution for GSM M2M connectivity. Users can choose to mount the modem directly onto their PC Board or simply mount in a DIP socket or header.

The GSM864CF has a 5V power supply, 7 configurable GPIOs, 1 DAC and 1 ADC, and optional GPS. Serial UARTs can be used to communicate with the device. With all of these innovative and cost effective features, the GSM865CF is an easy answer for your embedded M2M application requirements.

GSM865CF Features

- Quad-band EGSM 850 / 900 / 1800 / 1900 MHz
- GSM/GPRS protocol stack 3GPP Release 4 compliant
- Control via AT commands according to 3GPP 27.005, 27.007 and Telit custom
- Control via remote AT commands
- Serial port multiplexer 3GPP 27.010
- SIM application toolkit 3GPP TS 51.014
- SIM access profile
- TCP/IP stack access via AT commands
- Over-the-Air firmware management
- Voice and SMS (MO / MT)
- Output power
 - Class 4 (2W) @ 850 / 900 MHz
 - Class 1 (1W) @ 1800 / 1900 MHz
- Sensitivity:
 - ≤ -107 dBm @ 850 / 900 MHz
 - ≤ -106 dBm @ 1800 / 1900 MHz
- DARP/SAIC support
- Dimensions: 2.5" x 1.4" x 0.365"
- Operational temperature range (without GPS): -40°C to 80°C
- Operational temperature range (GPS configured): -30°C to 65°C
- Internal LDO regulator
 - Input voltage range: 4.75 to 5.25Vdc (5.0Vdc Nominal)
 - Supply disable via terminal input pin
- SIM Card
 - Standard locking SIM card socket
 - Or, optional SIM on a chip
- GSM and GPS available via Murata GSC miniature RF connector
- GPS
 - Stand alone GPS available at terminal pin interface
 - Dedicated GPS antenna connection with active antenna support



Applications

Suitable for all M2M Applications

- Fleet Management
- Asset Tracking
- Security Systems
- Telemetry
- Telematics & Telecontrol
- Remote Monitoring Systems
- Remote Meter Reading
- Vending Machines

Terminus Models & Ordering

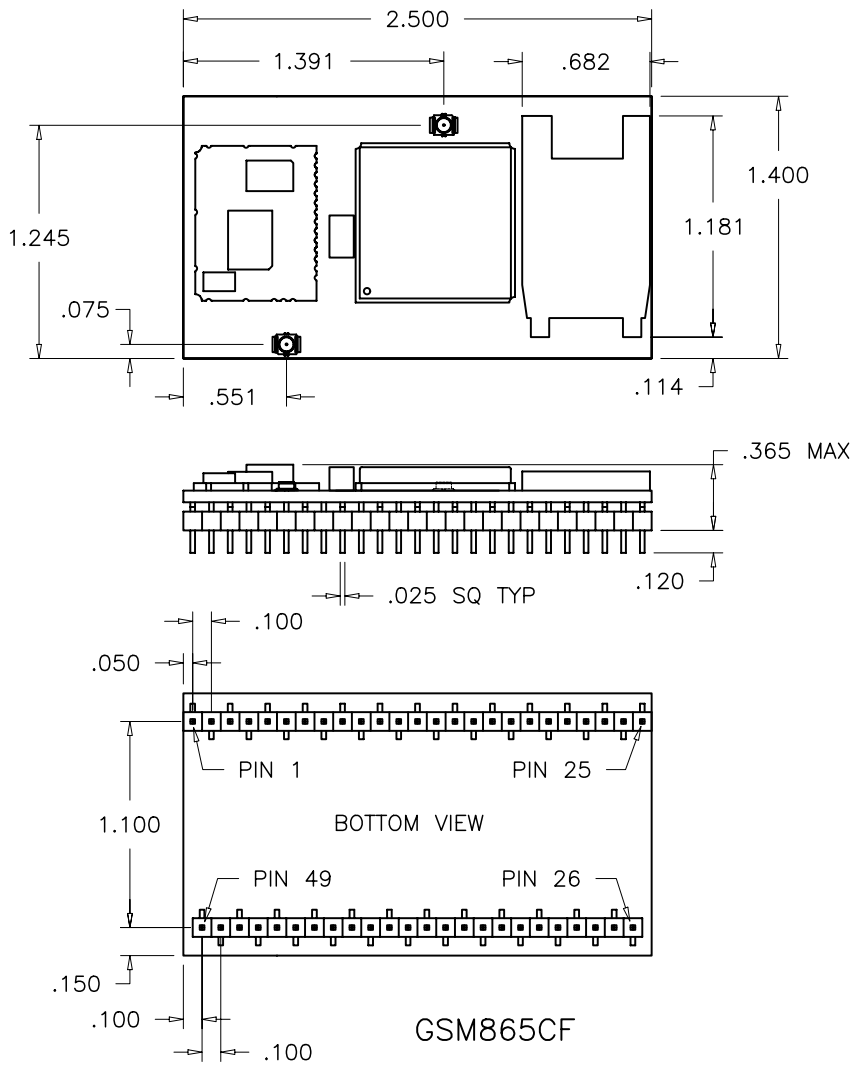
Ordering	Description
GSM865CF v1.1	Terminus GSM Plug-In Modem - GPS enabled
GSM865CF v2.0	Terminus GSM Plug-In Modem - without GPS
Additional Plug-In Products	
HSPA910CF v1.0	Terminus HSPA+ Plug-In Modem GPS Enabled AT&T Certified
EVD0910CF v3.0	Terminus EV-DO Plug-In Modem - Verizon
CDMA910CF v2.0	Terminus CDMA Plug-In Modem - Sprint
v3.0	Modem - Verizon
v4.0	Modem - Aeris
LTE910CF v1.0	Terminus LTE Plug-In Modem - AT&T
v2.0	Modem - Sprint
v3.0	Modem - Verizon
WiFi1500CF v1.0	Terminus Wi-Fi Plug-In Modem - GPS enabled
WiFi1500CF v2.0	Terminus WiFi Plug-In Modem - without GPS

2111 Comprehensive Drive
Aurora, Illinois 60505
630.499.2121
Fax: 630.851.5040
www.janus-rc.com

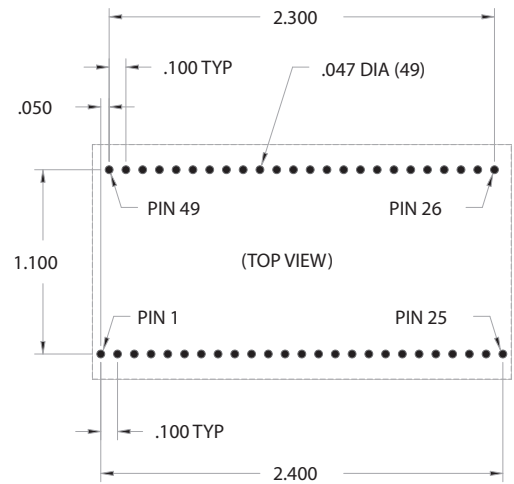
Bulletin **JA03-PB_GSM**
Revision **P06**
Date **26 Jan 2015**



Making machines talk.



GSM865CF Mechanical Drawing



Terminus Plug-In

JANUS REMOTE
C ● M M U N I C A T I O N S ●

Division of The Connor-Winfield Corporation
2111 Comprehensive Drive • Aurora, Illinois 60505
630.499.2121 • Fax: 630.851.5040

www.janus-rc.com

© Copyright 2015 Janus Remote Communications *Specifications subject to change without notice*
All Rights Reserved See website for latest revision. Not intended for life support applications.



Making machines talk.

Janus Remote Communications Europe

Bay 143
Shannon Industrial Estate
Shannon, Co. Clare, Ireland
Phone: +353 61 475 666