

JANUS REMOTE COMMUNICATIONS

P
R
O
D
U
C
T
B
R
I
E
F

LTE910CFX v1.00 4G Worldwide Embedded CAT1 Cellular Modem

Description

The Janus line of Common Footprint (CF) Embedded Modems are footprint compatible, embedded cellular devices for use in LTE communication networks globally. They were specifically designed to provide customers with cost effective modules that are easily integrated into new and existing designs, require limited customer certification resources, and are completely interchangeable to allow for maximum network flexibility while removing the worry of product obsolescence.

The LTE910CFX v1.00 Common Footprint (CF) Modem is an LTE Category 1 cellular modem with support for worldwide cellular networks.

Utilizing the Telit LE910C1-WWxD module as its cellular engine, the LTE910CFX v1.00 operates in most 4G LTE bands globally and support fallback to 3G (HSPA+) and 2G network technologies.

North American “end device” certification allows users to implement the LTE910CFX in their devices with no further carrier certification requirements.*

* Verizon may require FOTA and data retry demonstration for full certification. FirstNet requires certification in the user end product.



CellBridge™
Global Cellular Modem Solutions

LTE910CFX v1.00 Features

- Data Rate: LTE: 10D/5U Mbps
- Multi-Band Support
 - 4G (LTE): B1, B2, B3, B4, B5, B7, B8, B9, B12, B13, B14, B18, B19, B20, B25, B26 and B28
 - 3G (HSPA+): B1, B2, B4, B5, B6, B8, and B19
 - 2G: B2, B3, B5, and B8
- TCP/IP stack access via AT commands
- SMS (MO / MT)
- Output power: Class 3 (0.2W, 23 dBm) @ LTE
- Dimensions: 2.5" x 1.4" x 0.325"
- Operational temperature range: -40°C to 85°C
- Internal Switching Regulator:
 - Input Voltage Range: 4.75 to 5.25Vdc (5Vdc nominal)
 - Supply disable via terminal input pin
- Variable logic level (UART/GPIO)
 - Adjustable from 1.8 - 5.0Vdc
 - Defaults to 2.85v
- SIM Card
 - Dual locking SIM card sockets, micro (3FF size) SIM
- Antenna:
 - Cellular and GNSS antenna ports
 - U.FL miniature RF connectors
- GNSS
 - Stand alone GPS, GLONASS, Beidou, Galileo, and QZSS available at AT command interface
 - A-GPS support
 - NMEA data
 - GNSS antenna connection w/active antenna support

The LTE910CFX v1.00 is pin compatible with the full line of CF Janus Embedded Modem Products.

Approvals

FCC Approval: RI7LE910C1-WWxD
Carrier Approvals:
PTCRB
AT&T
Verizon

Applications

Suitable for all IoT Applications

- Fleet Management
- Asset Tracking
- Security Systems
- Telemetry
- Telematics & Telecontrol
- Remote Monitoring Systems
- Remote Meter Reading
- Vending Machines

Take the complexity out of designing cellular IoT solutions with Janus Embedded Modems.

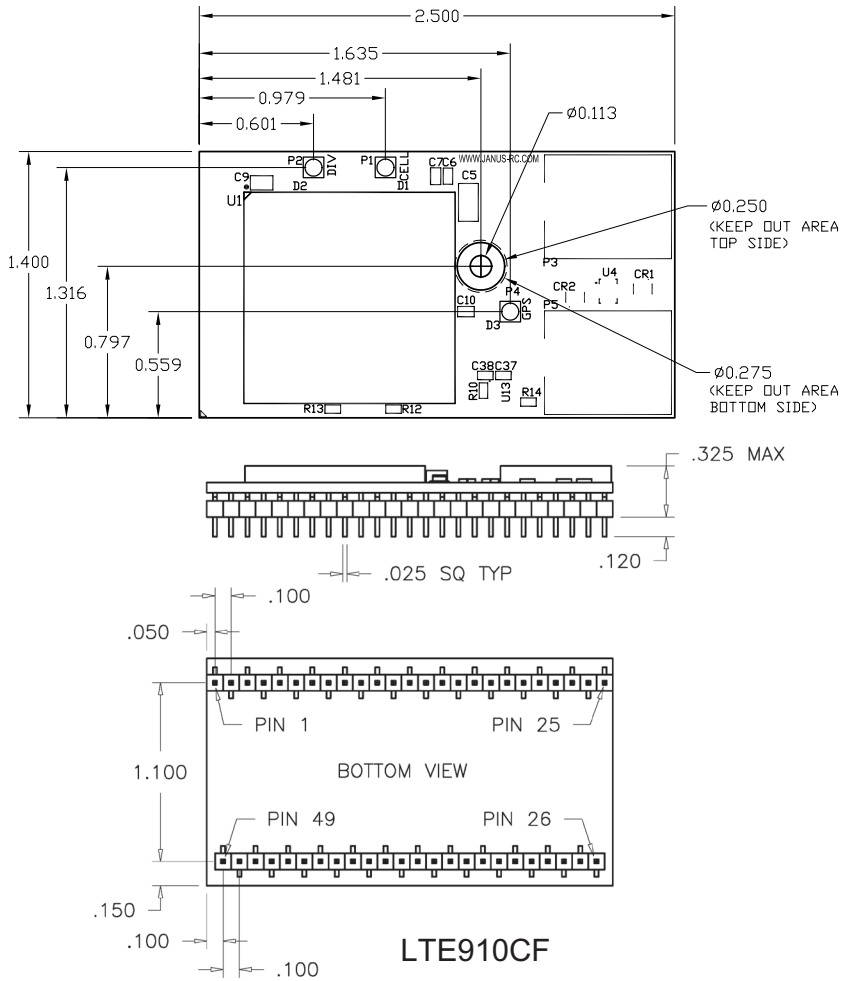


Making machines talk.

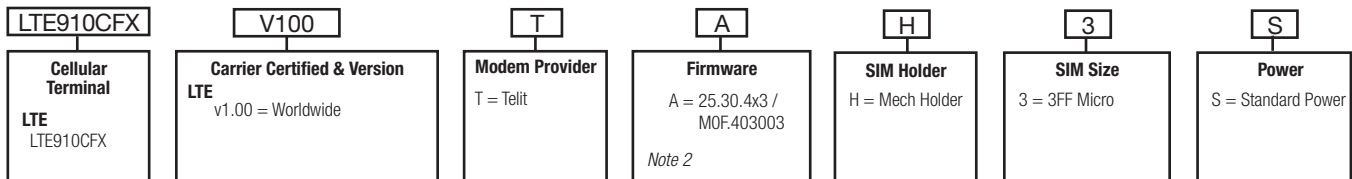
2359 Diehl Road
Aurora, IL 60502
630.499.2121
info@janus-rc.com
www.janus-rc.com

Bulletin JA03-PB_LTE910CFX v1
Revision 03
Date 28 Oct 2025

LTE910CFX v1.00 CAT 1 CF Cellular Modem Mechanical Drawings



Ordering Information



Example: Part Number – LTE910CFXV100TAH3S = LTE Cellular Cellular Modem Worldwide, Certified; Telit Modem; Standard Firmware with a U.FL Connector with a Variable Voltage with no configuration options.

Notes:

1. Config Options: SIM designation is for installation of the SIM
2. Check with Janus for appropriate firmware version.

Contact Sales for Additional Special Order Options: Bill Borton: bborton@janus-rc.com | 630-499-2121

Revision History

Revision	Revision Date	Note
00	06/21/22	Initial Product Brief
01	03/13/23	Updated Certifications
02	07/02/24	Updated Ordering Information
03	10/28/25	Updated Approvals

JANUS REMOTE COMMUNICATIONS

Division of The Connor-Winfield Corporation
2111 Comprehensive Dr. • Aurora, IL 60505
630.499.2121 • info@janus-rc.com

www.janus-rc.com

CellBridge™
Global Cellular Modem Solutions

© Copyright 2025 Janus Remote Communications | Specifications subject to change without notice.
All Rights Reserved | See website for latest revision. | Not intended for life support applications.