

# JANUS REMOTE COMMUNICATIONS

P  
R  
O  
D  
U  
C  
T  
  
B  
R  
I  
E  
F

## CF Socket Modem Series LTE910CF v18.00 CAT1 Embedded 4G Cellular Modem

### Description

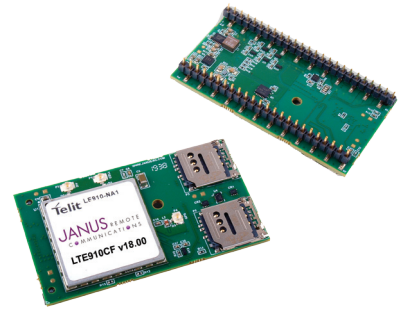
The Janus line of Common Footprint (CF) Socket Modems are footprint compatible, embedded cellular devices for use in LTE communication networks. They were specifically designed to provide customers with cost effective modules that are easily integrated into new and existing designs, require limited customer certification resources, and are completely interchangeable to allow for maximum network flexibility while removing the worry of product obsolescence.

The AT&T LTE910CF v18.00 Common Footprint (CF) Socket Modem is an LTE Category 1 PTCRB and Carrier certified 4G cellular modem with support for two SIM cards. It utilizes the Telit LE910-NA1 SSKU module as its cellular engine.

Multiple carriers are supported using two firmware loads selected via AT commands. The modem accommodates two SIM cards, selectable via AT commands. This allows selecting the most suitable carrier after products are deployed in the field.

The AT&T centric firmware supports operation in LTE bands B13, B12, B5, B4 and B2, with fallback to 3G HSPA+ networks as needed. End device certification allows users to implement the LTE910CF in their devices with no further North American carrier certification requirements.

The Verizon firmware supports operation in LTE bands B13, B4, and B2. End device certification allows users to implement the LTE910CF in their devices with no further North American carrier certification requirements.



### LTE910CF v18.00 CAT1 Features

- Data Rate: LTE: 10D/5U Mbps
- Frequency bands (Verizon)
  - LTE Bands: B2(1900), B4(AWS1700), B13(700)
- Frequency bands (AT&T)
  - LTE Bands: B12/B13(700), B5(850), B4(AWS1700), B2(1900)
  - 3G Bands: B5(850), B2(1900)
- TCP/IP stack access via AT commands
- SMS (MO / MT)
- Output power: Class 3
  - (0.2W, 23 dBm) @ LTE
  - (0.25W, 24 dBm) @ WCDMA
- Dimensions: 2.5" x 1.4" x 0.325"
- Operational temperature range: -40°C to 85°C
- Internal Switching Regulator:
  - Input Voltage Range: 4.75 to 5.25Vdc (5Vdc nominal)
  - Supply disable via terminal input pin
- Variable logic level (UART/GPIO)
  - Adjustable from 1.8 - 5.0Vdc
  - Defaults to 2.85v
- SIM Card
  - Two 3FF micro locking card cages
  - SIM selectable via AT commands
- Cellular, Rx Diversity & MIMO DL 2x2 available via miniature RF connector

Single version supports two different firmware loads for North America:

LTE910CF v18.00

- AT&T, T-Mobile, Rogers, Bell, Telus
- Verizon

*The LTE910CF is pin compatible with the full line of Janus Socket Modem CF Products.*

### Applications

Suitable for all M2M Applications

- Fleet Management
- Asset Tracking
- Security Systems
- Telemetry
- Telematics & Telecontrol
- Remote Monitoring Systems
- Remote Meter Reading
- Vending Machines

*Take the complexity out of designing cellular IoT solutions with Janus Socket Modems.*

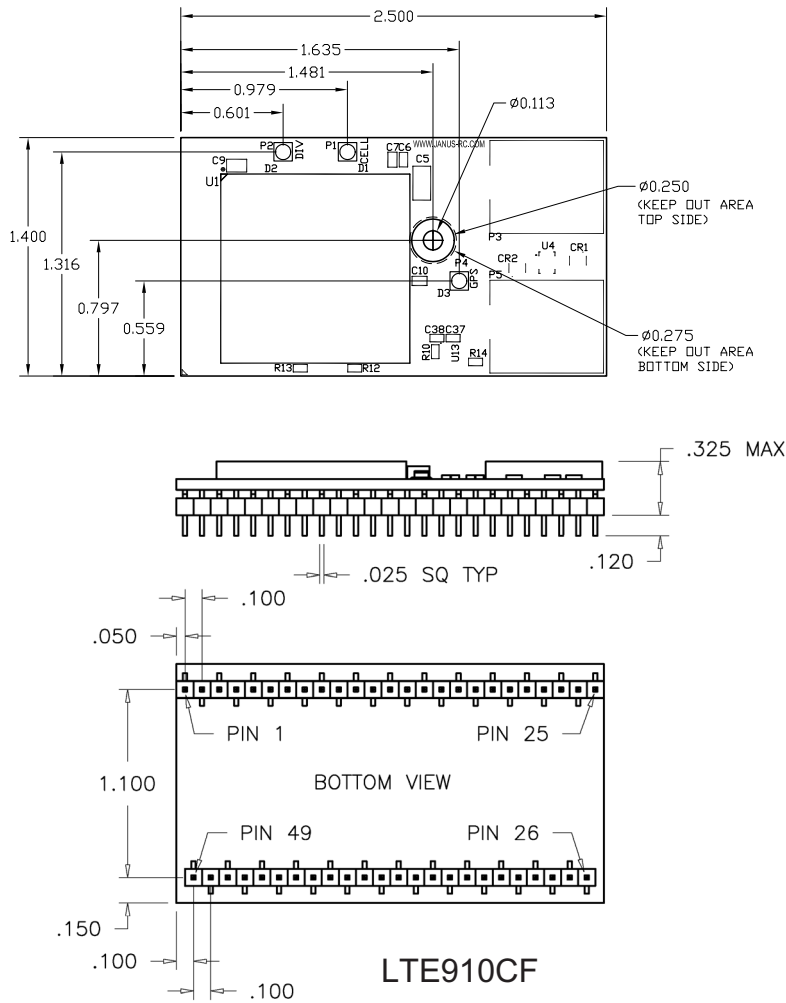
2111 Comprehensive Dr.  
Aurora, IL 60505  
**630.499.2121**  
info@janus-rc.com  
www.janus-rc.com

Bulletin **JA03-PB-LTE910CF-v18**  
Revision **01**  
Date **21 May 2020**

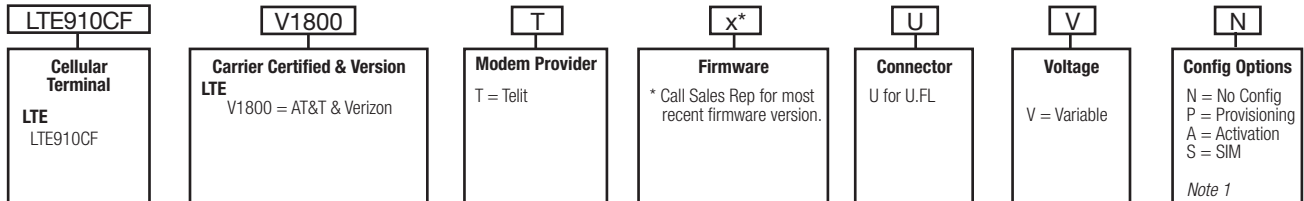


**Making machines talk.**

# LTE910CF CAT1 CF Socket Modem Mechanical Drawings



## Ordering Information



Example: Part Number – LTE910CFV1800TAUVN = LTE Cellular Plug-In Terminal; AT&T & Verizon Certified; Telit Modem; Current Firmware with a U.FL Connector with a Variable Voltage with no configuration options.

### Notes:

1. Config Options: Provisioning is turning on a device on the network. Activation is assigning MEID's to a customer account. SIM designation is for installation of the SIM

Contact Sales for Additional Special Order Options: Dave Jahr: djahr@janus-rc.com | 630-499-2121

## Revision History

Revision	Revision Date	Note
00	12/10/19	Initial Product Brief
01	05/21/20	Updated Certification Information

**JANUS** REMOTE COMMUNICATIONS

Division of The Connor-Winfield Corporation  
2111 Comprehensive Dr. • Aurora, IL 60505  
630.499.2121 • info@janus-rc.com

www.janus-rc.com



Making machines talk.

© Copyright 2020 Janus Remote Communications | Specifications subject to change without notice.  
All Rights Reserved | See website for latest revision. | Not intended for life support applications.