

# JANUS REMOTE COMMUNICATIONS

## Embedded Cellular XF Footprint LTE910XF v20.00 CAT-M1/NB2 Socket Modem

### Description

The Janus line of “X” Footprint (XF) socket modems are footprint compatible cellular modems for use in LTE communication networks globally. They are carrier “end device certified” with industry standard 20-pin headers that are easily integrated into new and existing designs.

The LTE910XF v20.00 CAT-M1/NB2 Socket Modem uses the Telit ME910G1-WW as its cellular engine and has global PTCRB, AT&T, Verizon and RED certifications. The LTE910XF v20.00 units operate in CAT-M1/NB2 LTE 4G and 2G bands (see below).

### Technical Specifications

#### Form Factor

Industry Standard 20-Pin Connector Interface  
PCB Mount  
1.14” x 1.3” x 0.256”

#### Approvals (pending)

Regulatory: FCC, GCF, PTCRB  
Carrier: PTCRB, AT&T, Verizon and RED certifications;

#### Temp Range: -40°C to 85°C

#### Input Voltage: 3.5 to 5.5Vdc

#### Data Rate:

**LTE Cat M1 (Rel. 14)**

- Uplink up to 1 Mbps
- Downlink up to 588 Kbps

**LTE Cat NB2 (Rel. 14)**

- Uplink up to 160 Kbps
- Downlink up to 120 Kbps

#### EGPRS (2G Fallback variants)

- Uplink up to 210 Kbps
- Downlink up to 264 Kbps

#### Frequency Bands

**LTE 4G Bands:** B1, B2, B3, B4, B5, B8, B12, B13, B18, B19, B20, B25, B26, B27, B28, B66, B71, B85  
**2G Bands:** B2, B3, B5, B8

#### Interface:

**UART & USB**  
Internal TCP/IP stack available via AT commands  
Use external stack with CDC-ACM, NCM & MBIM drivers

#### SIM Card: 3FF Micro

#### Antenna Connections: Cellular and GPS

#### Warranty: One year standard

### Applications

- Fleet Management
- Asset Tracking
- Security Systems
- Telemetry
- Telematics & Telecontrol
- Remote Monitoring Systems
- Remote Meter Reading
- Vending Machines



The LTE910XF v20.00 modems are part of the CellBridge™ Janus Products.

**CellBridge™**  
Global Cellular Modem Solutions

### Features

- Industry Standard 20-Pin Connector Footprint
- 2 U.FL port for antenna diversity
- Easy migration path, future-proof
- Development kits available

### Advantages

- Approvals: PTCRB, AT&T, Verizon and RED certifications
- Migration path to new LTE Bands

### Telit OneEdge® Availability

Telit offers ME910G1 with OneEdge, a software suite integrated with deployment and management tools to address the complexity expected with the exponential growth in the number of IoT devices. The following components include:

- **Lightweight M2M protocol** enables comprehensive device management, FOTA updates and application enablement of low-power devices with the goal of more robust and secure connections.
- **Telit simWISE™**, a module-embedded SIM technology, enables reduced footprint, streamlined manufacturing and logistics, secure communications for connected devices.
- **Telit IoT AppZone** can run code and applications directly inside the Telit module.
- **Telit’s Connection Manager** automates operations for connection to cellular networks.
- **Location services** provide the position of devices even in the absence of a GNSS connection.

Telit ONEEDGE™



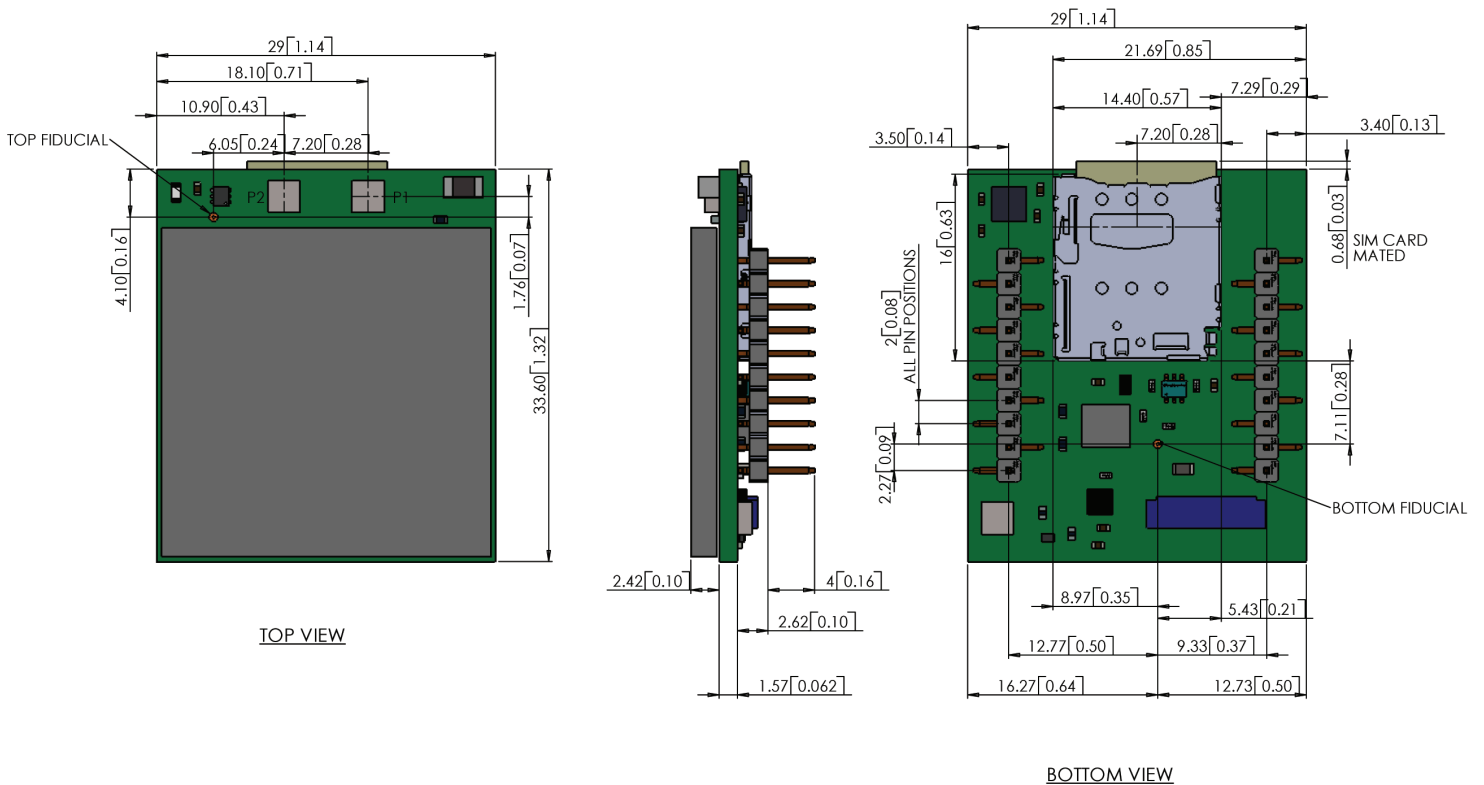
Making machines talk.

2359 Diehl Road  
Aurora, IL 60502  
**630.499.2121**

info@janus-rc.com  
www.janus-rc.com

Bulletin **JAZ0-PB\_LTE-v20**  
Revision **00**  
Date **22 April 2020**

## LTE910XF v20.00 CAT-M1/NB2 Mechanical Drawing



Driving Dimensions: mm  
[inches]

### Ordering Information

<b>LTE910XF</b>	<b>V2000</b>	<b>T</b>	<b>X</b>	<b>H</b>	<b>3</b>	<b>L</b>
<b>Cellular Terminal</b>	<b>Carrier Certified &amp; Version</b>	<b>Modem Provider</b>	<b>Firmware</b>	<b>SIM Holder</b>	<b>SIM Size</b>	<b>Power</b>
LTE LTE910XF	LTE v20.00 CAT-M1	T = Telit S = Sierra Wireless N = Nordic	* Call Sales Rep for most recent firmware version.	H = Mech Holder E = Embedded IC B = Both	H or B = 2, 3, 4 size If SIM Holder is "E" N = No SIM Card	S = Standard Power L = Low Power

Example: Part Number – LTE910XFV2000TxUVN = LTE Cellular XF Socket Modem; Telit Modem; Current Firmware; Mech SIM Holder; SIM Size Card 3; Low Power

Contact Sales for Additional Special Order Options: Dave Jahr: djahr@janus-rc.com | 630-499-2121

### Revision History

Revision	Revision Date	Note
00	04/22/20	Initial Release